

# Site Plans and Presentations



## Planning Committee

Thu 17 Apr  
2025  
7.00 pm

Oakenshaw Community  
Centre, Castleditch Lane,  
B98 7YB



**If you have any queries on this Agenda please contact**

**Gavin Day  
Democratic Services Officer**

**Town Hall, Walter Stranz Square, Redditch, B98 8AH**

**Tel: (01527) 64252 (Ext. 3304)**

**e.mail: [gavin.day@bromsgroveandredditch.gov.uk](mailto:gavin.day@bromsgroveandredditch.gov.uk)**

# Planning

Thursday, 17th April, 2025

7.00 pm

Oakenshaw Community Centre

## Agenda

### Membership:

Cllrs:

Andrew Fry (Chair)

William Boyd (Vice-Chair)

Juma Begum

Brandon Clayton

Claire Davies

Bill Hartnett

Sid Khan

David Munro

Jen Snape

- 5.** 25/00103/PIP - Land Adjacent to Feckenham Gardens, Astwood Lane, Feckenham, Redditch, Worcestershire, B96 6JQ (Pages 5 - 8)
- 6.** 25/00207/ADV - Land Adjacent, Birmingham Road, Redditch, Worcestershire. (Pages 9 - 22)
- 7.** 25/00247/S73 - Phase 6 Development Brockhill East, Hewell Road, Redditch, Worcestershire (Pages 23 - 36)

This page is intentionally left blank

25/00103/PIP

Land Adjacent To Feckenham Gardens  
Astwood Lane  
Feckenham  
Redditch  
Worcestershire  
B96 6JQ

Permission in Principle for up to 9 dwellings

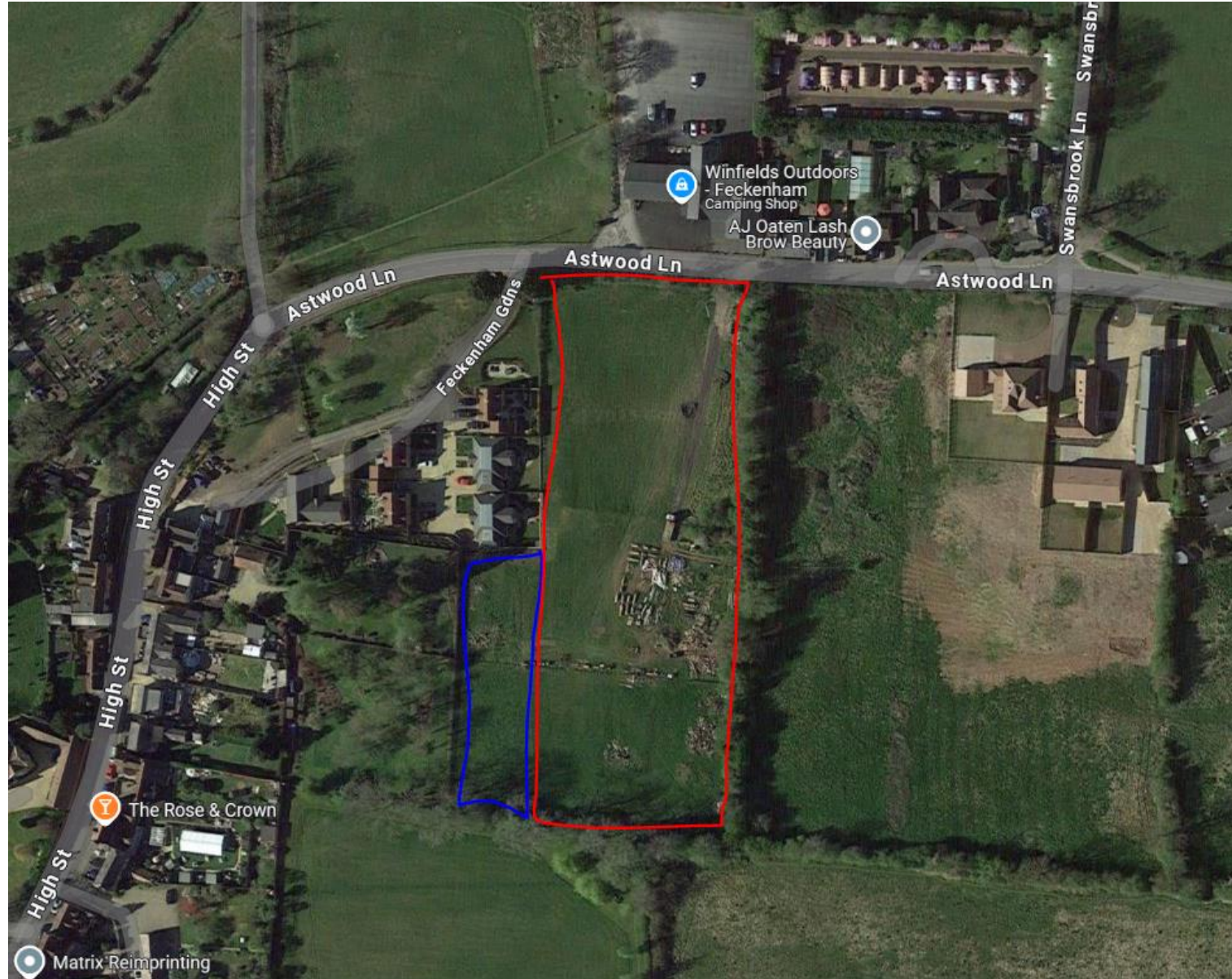
Recommendation: Approval

# Site Location Plan





# Aerial Photograph of Site







Views from Astwood Lane





**25/00207/ADV**

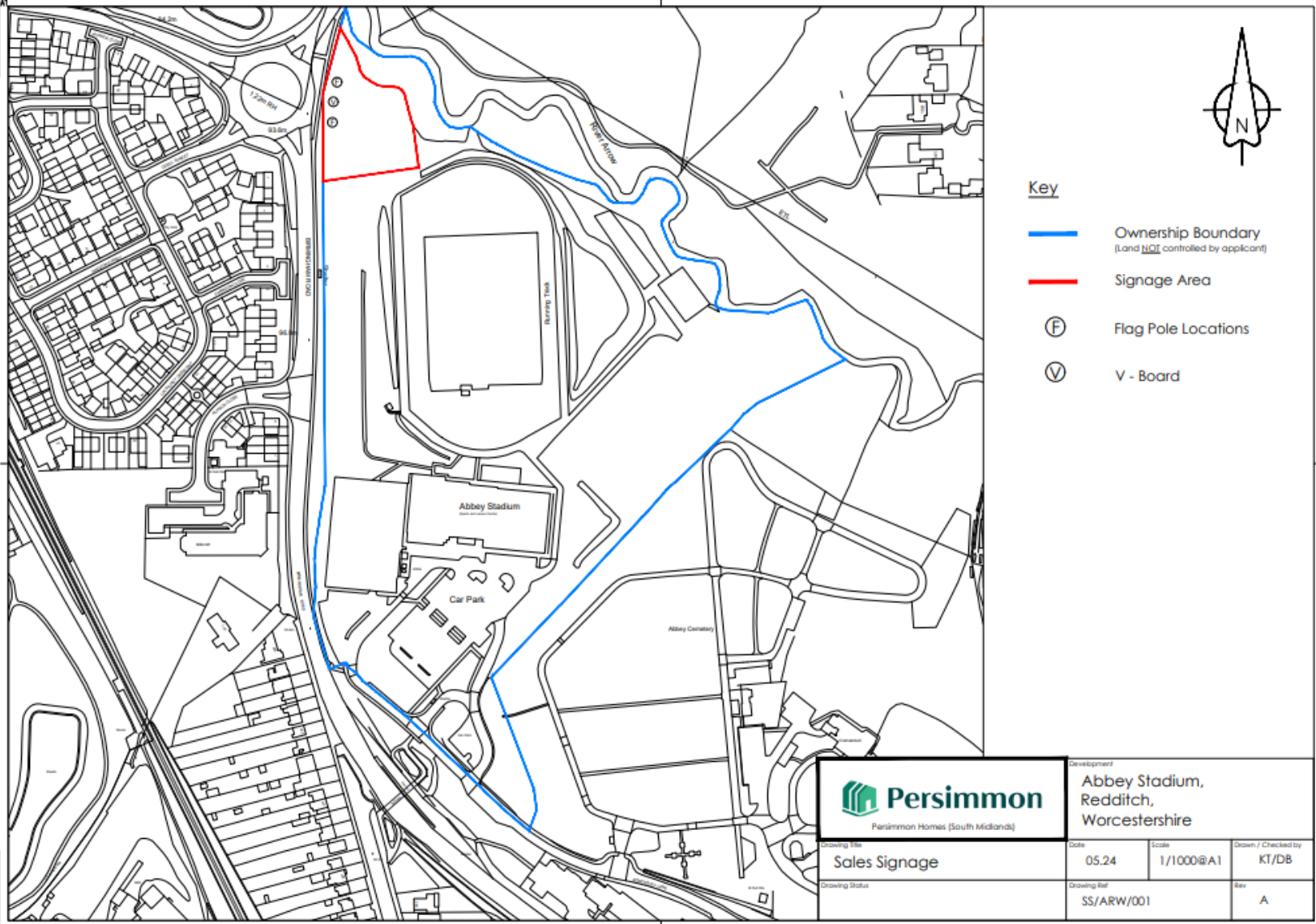
Land Adjacent to Birmingham Road, Redditch  
Worcestershire

**Proposal:** Retrospective application for consent to display 1x V-Board and 2x flagpole and flags to advertise residential development approved under 19/00977/HYB

**Recommendation:**

That having regard to the development plan and to all other material considerations, Advertisement Consent be GRANTED subject to conditions.

# Site Location Plan



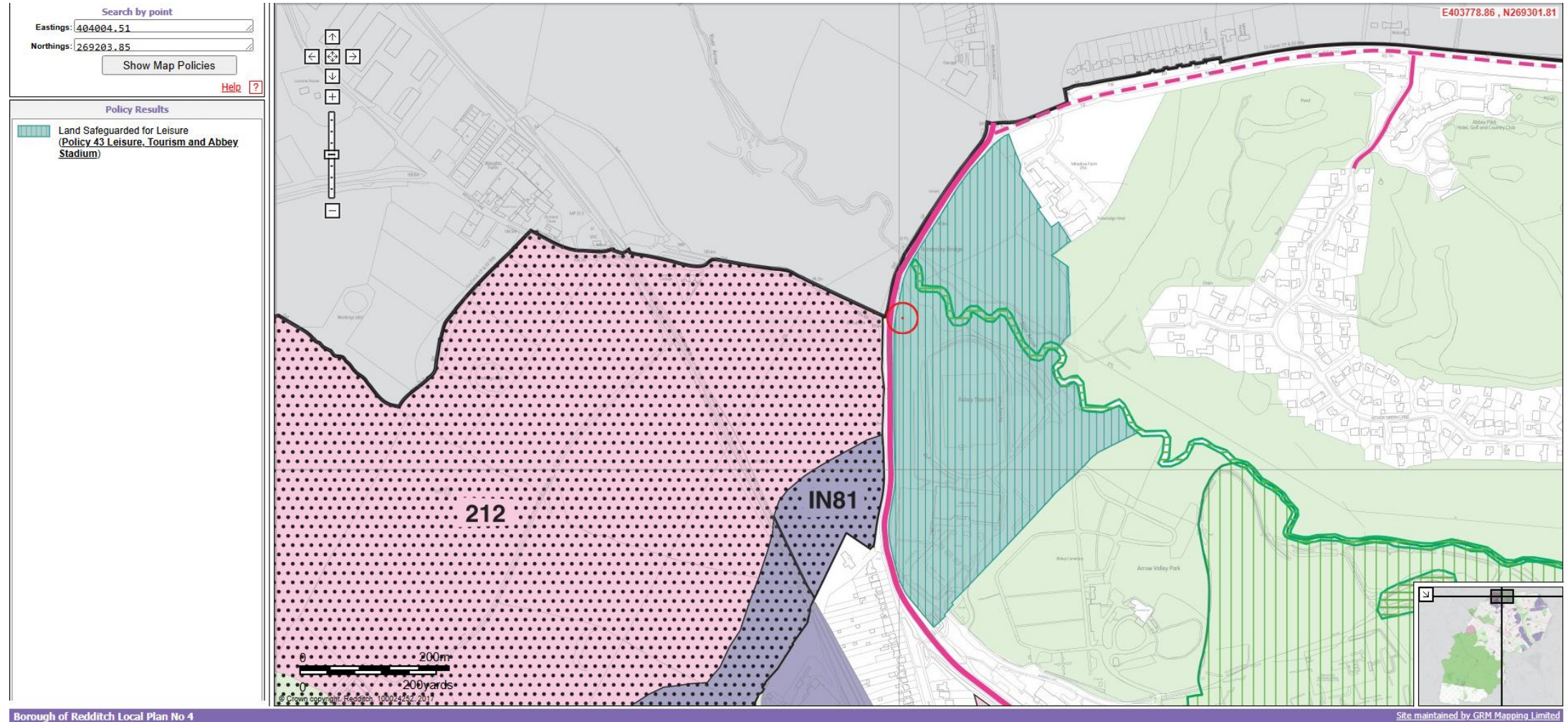


# Aerial Photograph of site





# Redditch Borough Plan Proposals Map



Borough of Redditch Local Plan No 4

Site maintained by GRM Mapping Limited

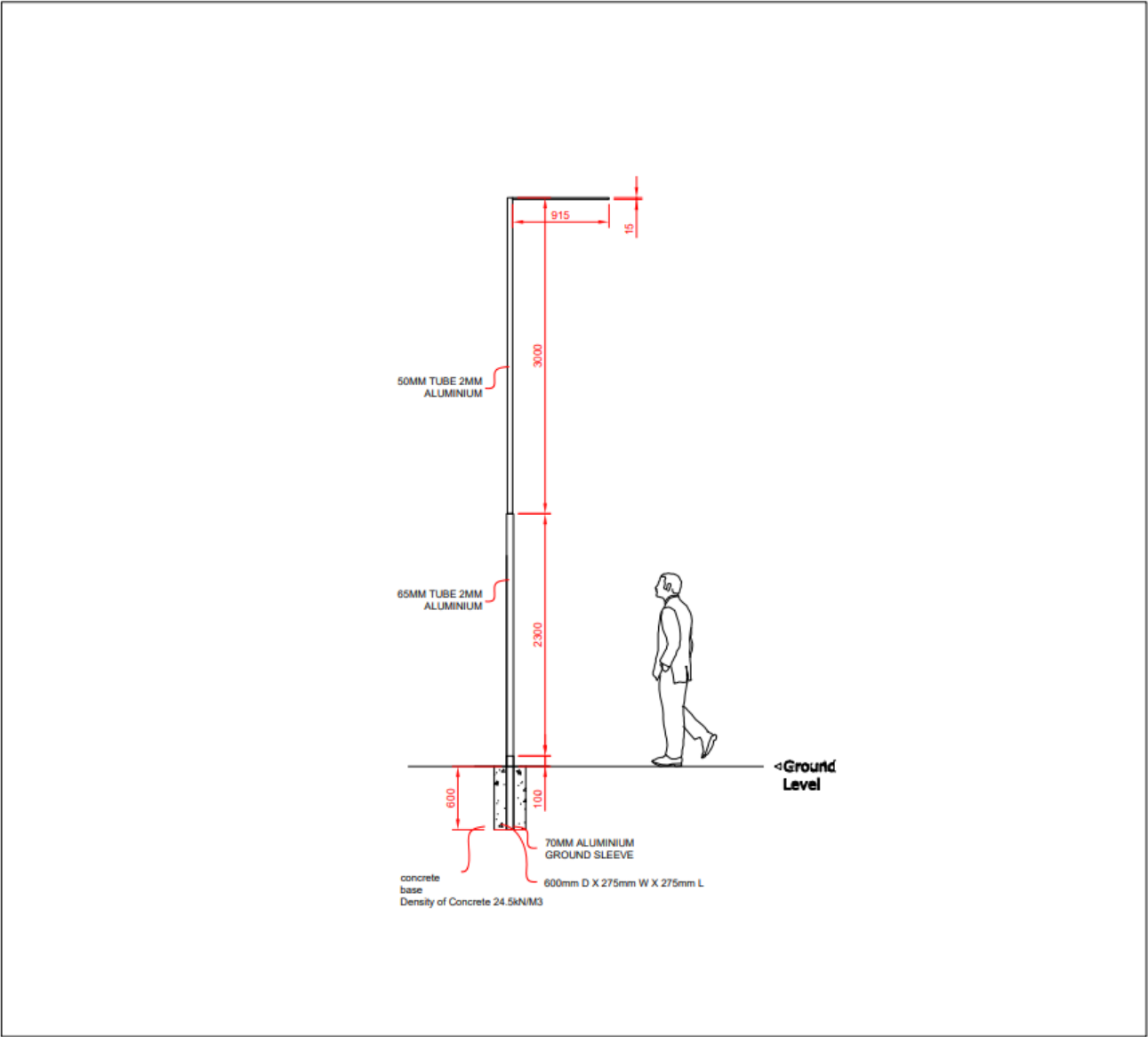
Residential Area BDP19, BDP7

# Flags and V-Board plans

## V-BOARD & FLAGS



# Flagpole plans



Additional Info:

Revision	Details	Date

**evolution**  
contract interiors signage visual communication  
t: 01604 40 55 70  
w: www.evolutioncreates.co.uk  
Fortune Close, Riverside Business Park, Northampton, NN3 1BZ

Customer	
Project	FLAG POLE
Drawing	WORKING DRAWING
Date	24.04.18
Scale	1:50 @ A4

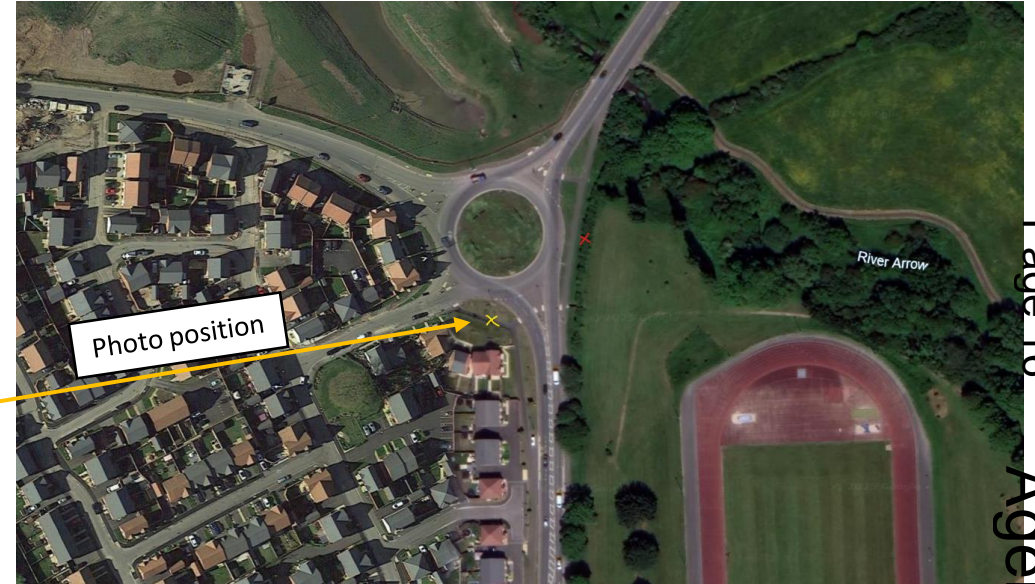


# Site imagery



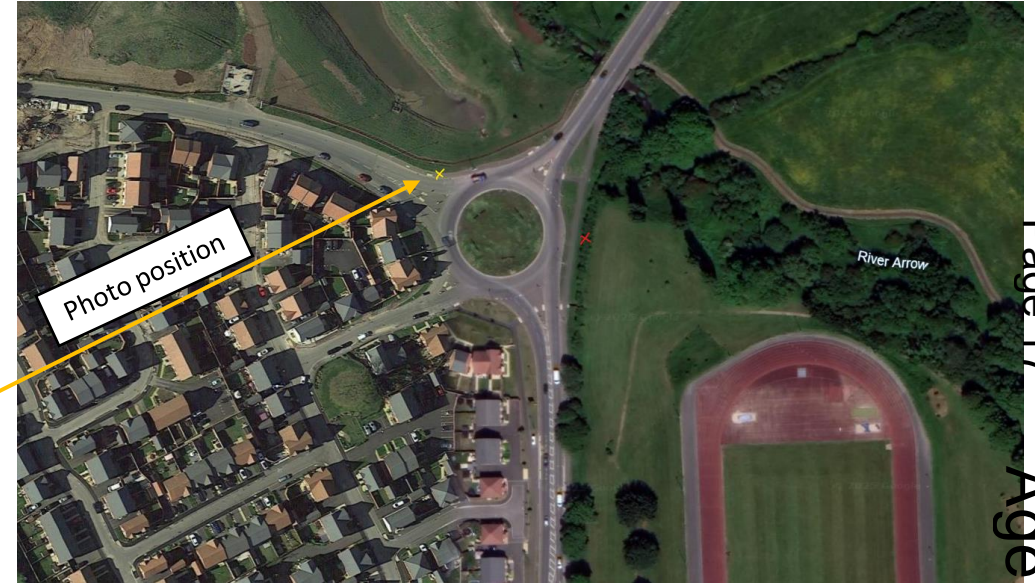


# Site imagery



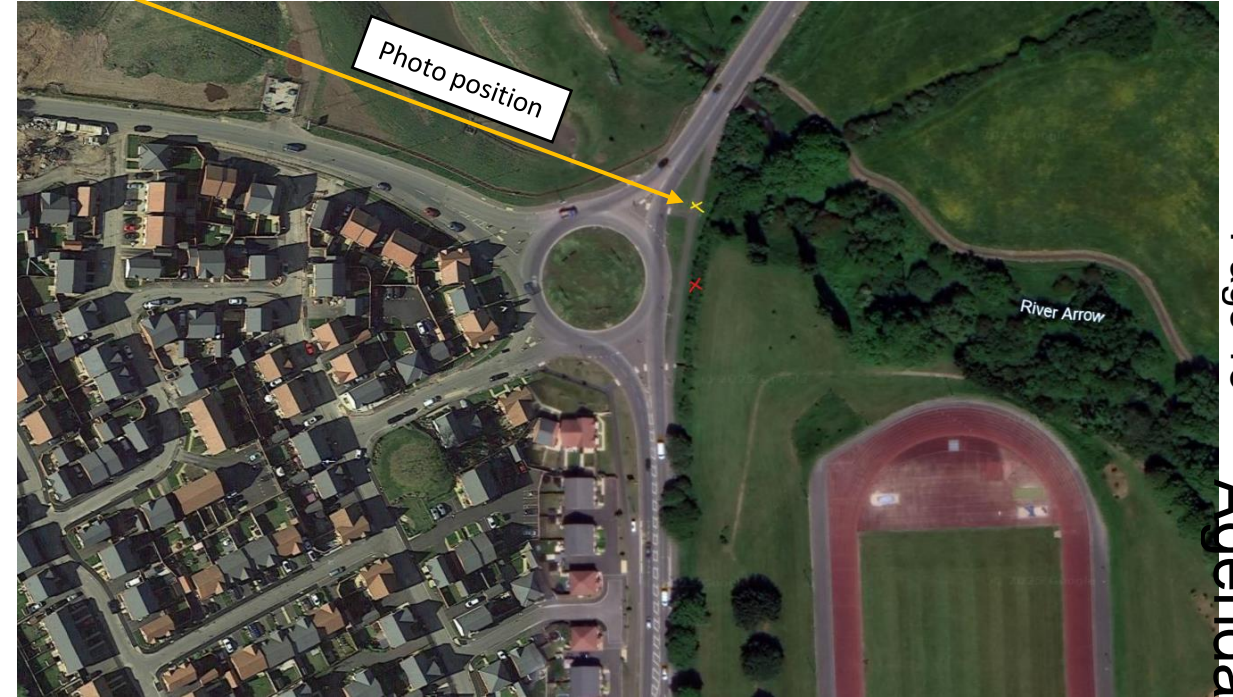


# Site imagery





# Site imagery

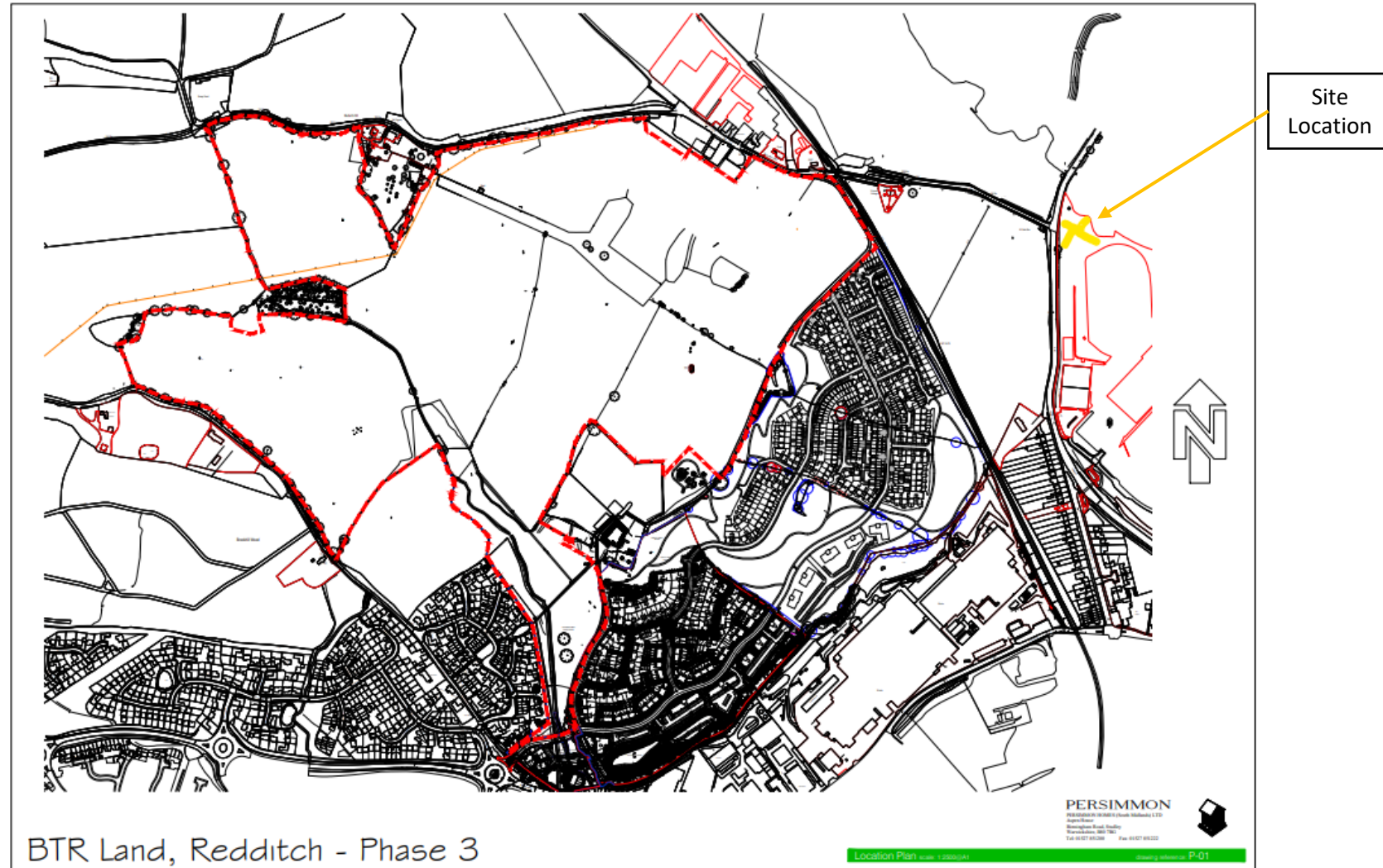




# Site imagery



# Application 19/00977/HYB which the signs relate to





# Site imagery



This page is intentionally left blank

# 25/00247/S73

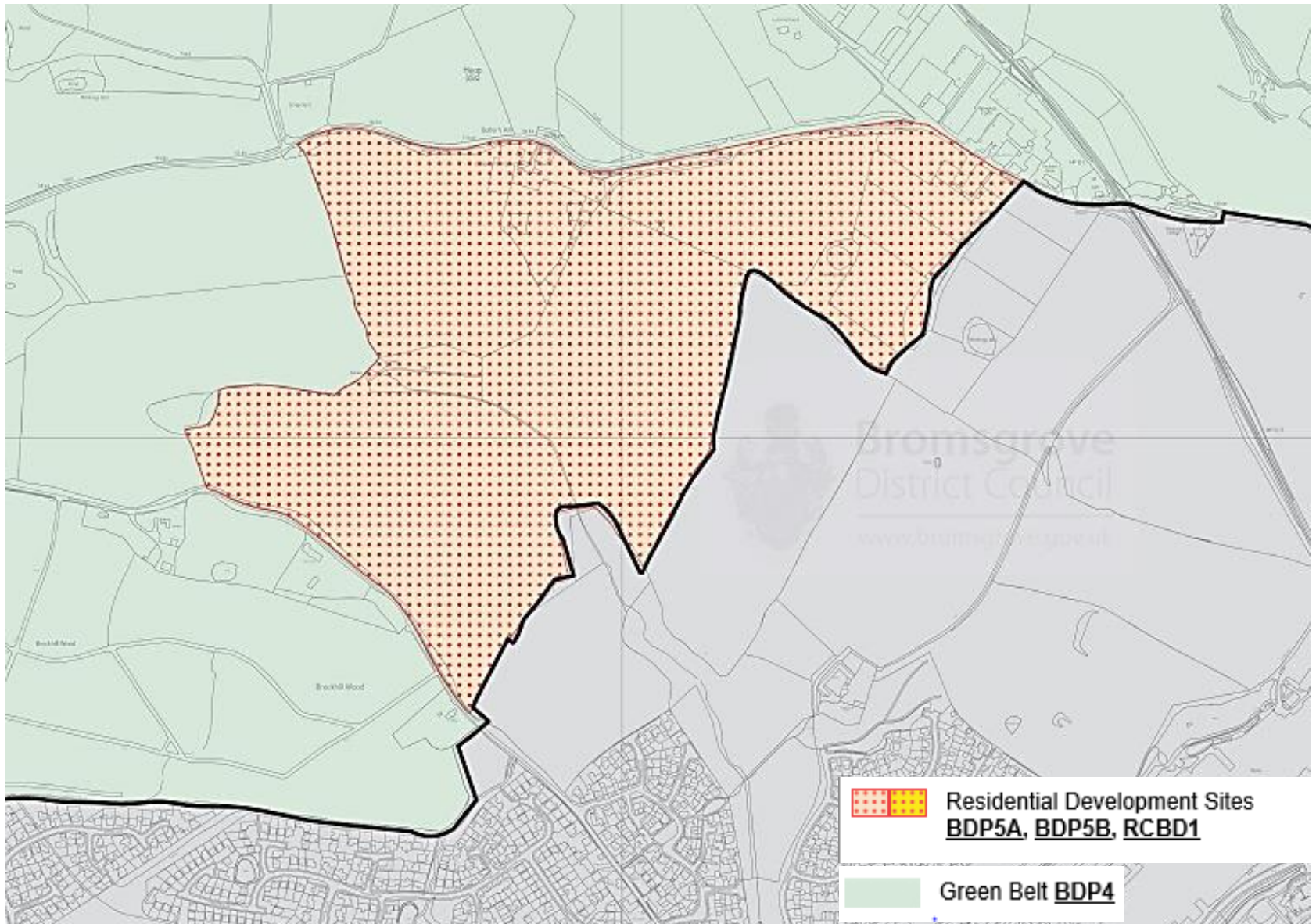
Sixth Phase Brockhill Development, Weights Lane, Redditch,  
Worcestershire

Variation of condition 1 (approved plans) to substitute approved plans and removal of condition 4 (detailed landscaping plans) of application 22/01553/REM (Application for reserved matters approval (appearance, landscaping, layout and scale) for the construction of 109 dwellings and associated works and infrastructure, pursuant to the outline planning permissions 19/00976/HYB and 19/00977/HYB (Cross boundary application with Bromsgrove DC 22/01608/REM))

Recommendation: Grant Subject to Conditions



# District Plan Map Allocation



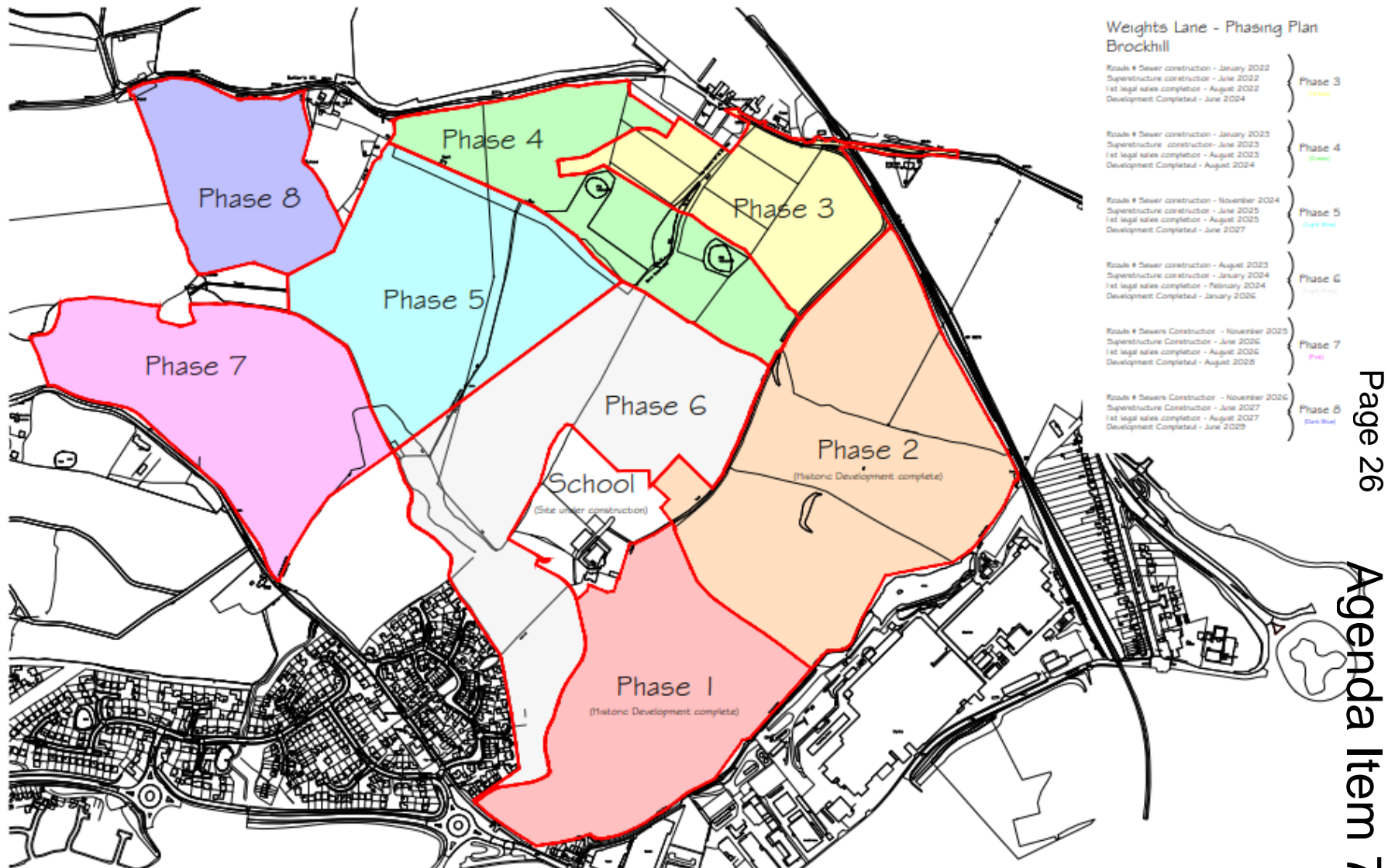


# Approved Framework Plan





# Approved Phasing Plan





# Proposed Site Layout


Ref	Ref	Subs Name	Arrangement	Class	Units	Net GFA (sqft)	Net GFA (sqm)	Net GFA (sqft)	Net GFA (sqm)
001	001	Residential	Single/Tenure	2	2000	718	66.5	4	3.68
002	002	Residential	Single/Tenure	2	2000	718	66.5	4	3.68
003	003	Residential	Single/Tenure	2	2000	718	66.5	4	3.68
004	004	Residential	Single/Tenure	2	2000	718	66.5	4	3.68
005	005	Residential	Single/Tenure	2	2000	718	66.5	4	3.68
006	006	Residential	Single/Tenure	2	2000	718	66.5	4	3.68
007	007	Residential	Single/Tenure	2	2000	718	66.5	4	3.68
008	008	Residential	Single/Tenure	2	2000	718	66.5	4	3.68
009	009	Residential	Single/Tenure	2	2000	718	66.5	4	3.68
010	010	Residential	Single/Tenure	2	2000	718	66.5	4	3.68
011	011	Residential	Single/Tenure	2	2000	718	66.5	4	3.68
012	012	Residential	Single/Tenure	2	2000	718	66.5	4	3.68
013	013	Residential	Single/Tenure	2	2000	718	66.5	4	3.68
014	014	Residential	Single/Tenure	2	2000	718	66.5	4	3.68
015	015	Residential	Single/Tenure	2	2000	718	66.5	4	3.68
016	016	Residential	Single/Tenure	2	2000	718	66.5	4	3.68
017	017	Residential	Single/Tenure	2	2000	718	66.5	4	3.68
018	018	Residential	Single/Tenure	2	2000	718	66.5	4	3.68
019	019	Residential	Single/Tenure	2	2000	718	66.5	4	3.68
020	020	Residential	Single/Tenure	2	2000	718	66.5	4	3.68
021	021	Residential	Single/Tenure	2	2000	718	66.5	4	3.68
022	022	Residential	Single/Tenure	2	2000	718	66.5	4	3.68
023	023	Residential	Single/Tenure	2	2000	718	66.5	4	3.68
024	024	Residential	Single/Tenure	2	2000	718	66.5	4	3.68
025	025	Residential	Single/Tenure	2	2000	718	66.5	4	3.68
026	026	Residential	Single/Tenure	2	2000	718	66.5	4	3.68
027	027	Residential	Single/Tenure	2	2000	718	66.5	4	3.68
028	028	Residential	Single/Tenure	2	2000	718	66.5	4	3.68
029	029	Residential	Single/Tenure	2	2000	718	66.5	4	3.68
030	030	Residential	Single/Tenure	2	2000	718	66.5	4	3.68
031	031	Residential	Single/Tenure	2	2000	718	66.5	4	3.68
032	032	Residential	Single/Tenure	2	2000	718	66.5	4	3.68
033	033	Residential	Single/Tenure	2	2000	718	66.5	4	3.68
034	034	Residential	Single/Tenure	2	2000	718	66.5	4	3.68
035	035	Residential	Single/Tenure	2	2000	718	66.5	4	3.68
036	036	Residential	Single/Tenure	2	2000	718	66.5	4	3.68
037	037	Residential	Single/Tenure	2	2000	718	66.5	4	3.68
038	038	Residential	Single/Tenure	2	2000	718	66.5	4	3.68
039	039	Residential	Single/Tenure	2	2000	718	66.5	4	3.68
040	040	Residential	Single/Tenure	2	2000	718	66.5	4	3.68
041	041	Residential	Single/Tenure	2	2000	718	66.5	4	3.68
042	042	Residential	Single/Tenure	2	2000	718	66.5	4	3.68
043	043	Residential	Single/Tenure	2	2000	718	66.5	4	3.68
044	044	Residential	Single/Tenure	2	2000	718	66.5	4	3.68
045	045	Residential	Single/Tenure	2	2000	718	66.5	4	3.68
046	046	Residential	Single/Tenure	2	2000	718	66.5	4	3.68
047	047	Residential	Single/Tenure	2	2000	718	66.5	4	3.68
048	048	Residential	Single/Tenure	2	2000	718	66.5	4	3.68
049	049	Residential	Single/Tenure	2	2000	718	66.5	4	3.68
050	050	Residential	Single/Tenure	2	2000	718	66.5	4	3.68
051	051	Residential	Single/Tenure	2	2000	718	66.5	4	3.68
052	052	Residential	Single/Tenure	2	2000	718	66.5	4	3.68
053	053	Residential	Single/Tenure	2	2000	718	66.5	4	3.68
054	054	Residential	Single/Tenure	2	2000	718	66.5	4	3.68
055	055	Residential	Single/Tenure	2	2000	718	66.5	4	3.68
056	056	Residential	Single/Tenure	2	2000	718	66.5	4	3.68
057	057	Residential	Single/Tenure	2	2000	718	66.5	4	3.68
058	058	Residential	Single/Tenure	2	2000	718	66.5	4	3.68
059	059	Residential	Single/Tenure	2	2000	718	66.5	4	3.68
060	060	Residential	Single/Tenure	2	2000	718	66.5	4	3.68
061	061	Residential	Single/Tenure	2	2000	718	66.5	4	3.68
062	062	Residential	Single/Tenure	2	2000	718	66.5	4	3.68
063	063	Residential	Single/Tenure	2	2000	718	66.5	4	3.68
064	064	Residential	Single/Tenure	2	2000	718	66.5	4	3.68
065	065	Residential	Single/Tenure	2	2000	718	66.5	4	3.68
066	066	Residential	Single/Tenure	2	2000	718	66.5	4	3.68
067	067	Residential	Single/Tenure	2	2000	718	66.5	4	3.68
068	068	Residential	Single/Tenure	2	2000	718	66.5	4	3.68
069	069	Residential	Single/Tenure	2	2000	718	66.5	4	3.68
070	070	Residential	Single/Tenure	2	2000	718	66.5	4	3.68
071	071	Residential	Single/Tenure	2	2000	718	66.5	4	3.68
072	072	Residential	Single/Tenure	2	2000	718	66.5	4	3.68
073	073	Residential	Single/Tenure	2	2000	718	66.5	4	3.68
074	074	Residential	Single/Tenure	2	2000	718	66.5	4	3.68
075	075	Residential	Single/Tenure	2	2000	718	66.5	4	3.68
076	076	Residential	Single/Tenure	2	2000	718	66.5	4	3.68
077	077	Residential	Single/Tenure	2	2000	718	66.5	4	3.68
078	078	Residential	Single/Tenure	2	2000	718	66.5	4	3.68
079	079	Residential	Single/Tenure	2	2000	718	66.5	4	3.68
080	080	Residential	Single/Tenure	2	2000	718	66.5	4	3.68
081	081	Residential	Single/Tenure	2	2000	718	66.5	4	3.68
082	082	Residential	Single/Tenure	2	2000	718	66.5	4	3.68
083	083	Residential	Single/Tenure	2	2000	718	66.5	4	3.68
084	084	Residential	Single/Tenure	2	2000	718	66.5	4	3.68
085	085	Residential	Single/Tenure	2	2000	718	66.5	4	3.68
086	086	Residential	Single/Tenure	2	2000	718	66.5	4	3.68
087	087	Residential	Single/Tenure	2	2000	718	66.5	4	3.68
088	088	Residential	Single/Tenure	2	2000	718	66.5	4	3.68
089	089	Residential	Single/Tenure	2	2000	718	66.5	4	3.68
090	090	Residential	Single/Tenure	2	2000	718	66.5	4	3.68
091	091	Residential	Single/Tenure	2	2000	718	66.5	4	3.68
092	092	Residential	Single/Tenure	2	2000	718	66.5	4	3.68
093	093	Residential	Single/Tenure	2	2000	718	66.5	4	3.68
094	094	Residential	Single/Tenure	2	2000	718	66.5	4	3.68
095	095	Residential	Single/Tenure	2	2000	718	66.5	4	3.68
096	096	Residential	Single/Tenure	2	2000	718	66.5	4	3.68
097	097	Residential	Single/Tenure	2	2000	718	66.5	4	3.68
098	098	Residential	Single/Tenure	2	2000	718	66.5	4	3.68
099	099	Residential	Single/Tenure	2	2000	718	66.5	4	3.68
100	100	Residential	Single/Tenure	2	2000	718	66.5	4	3.68

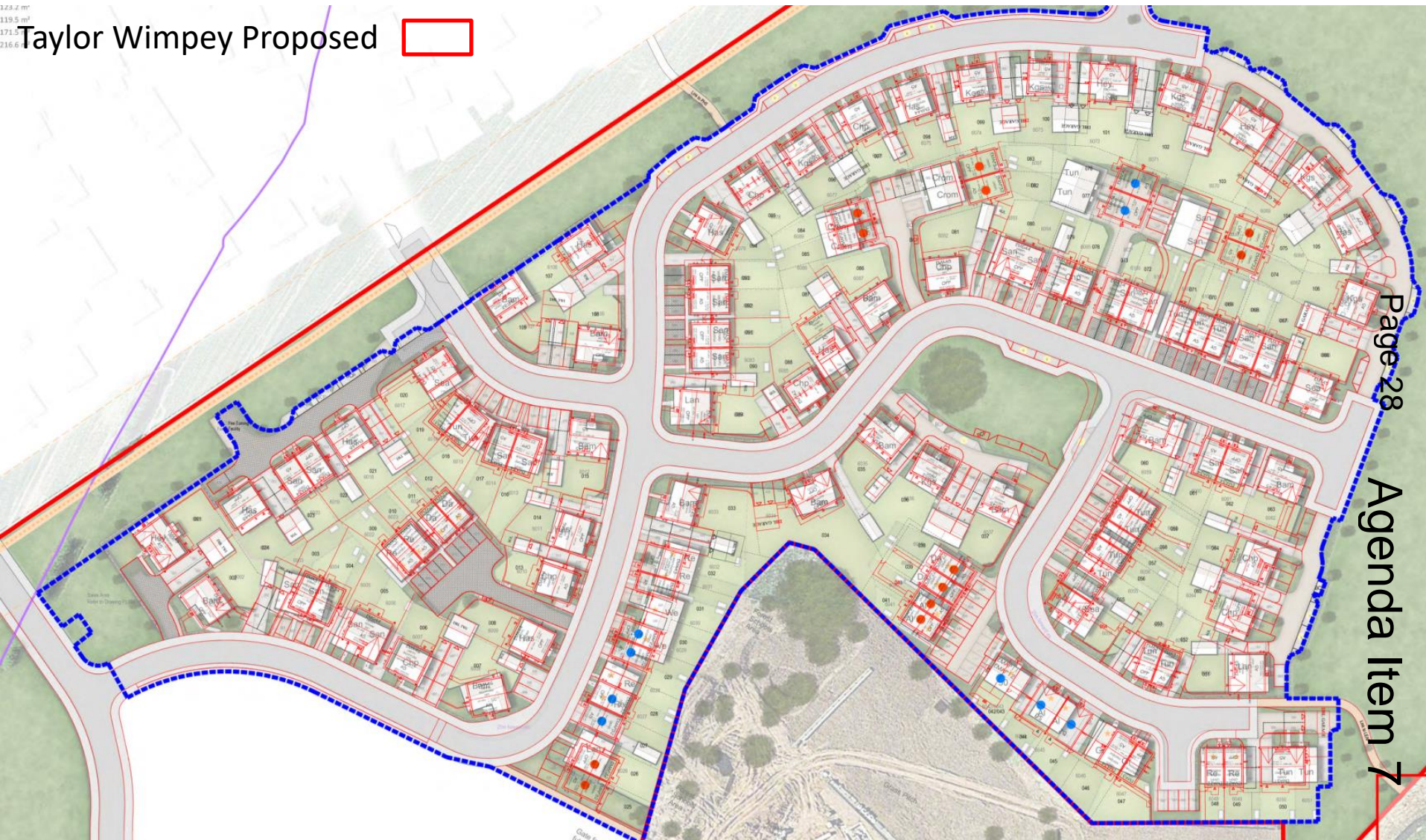




# Taylor Wimpey Proposed & Persimmon Approved Scheme Overlay

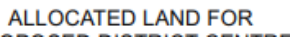
144.2 m<sup>2</sup>  
119.5 m<sup>2</sup>  
171.5 m<sup>2</sup>  
216.6 m<sup>2</sup>

Taylor Wimpey Proposed 





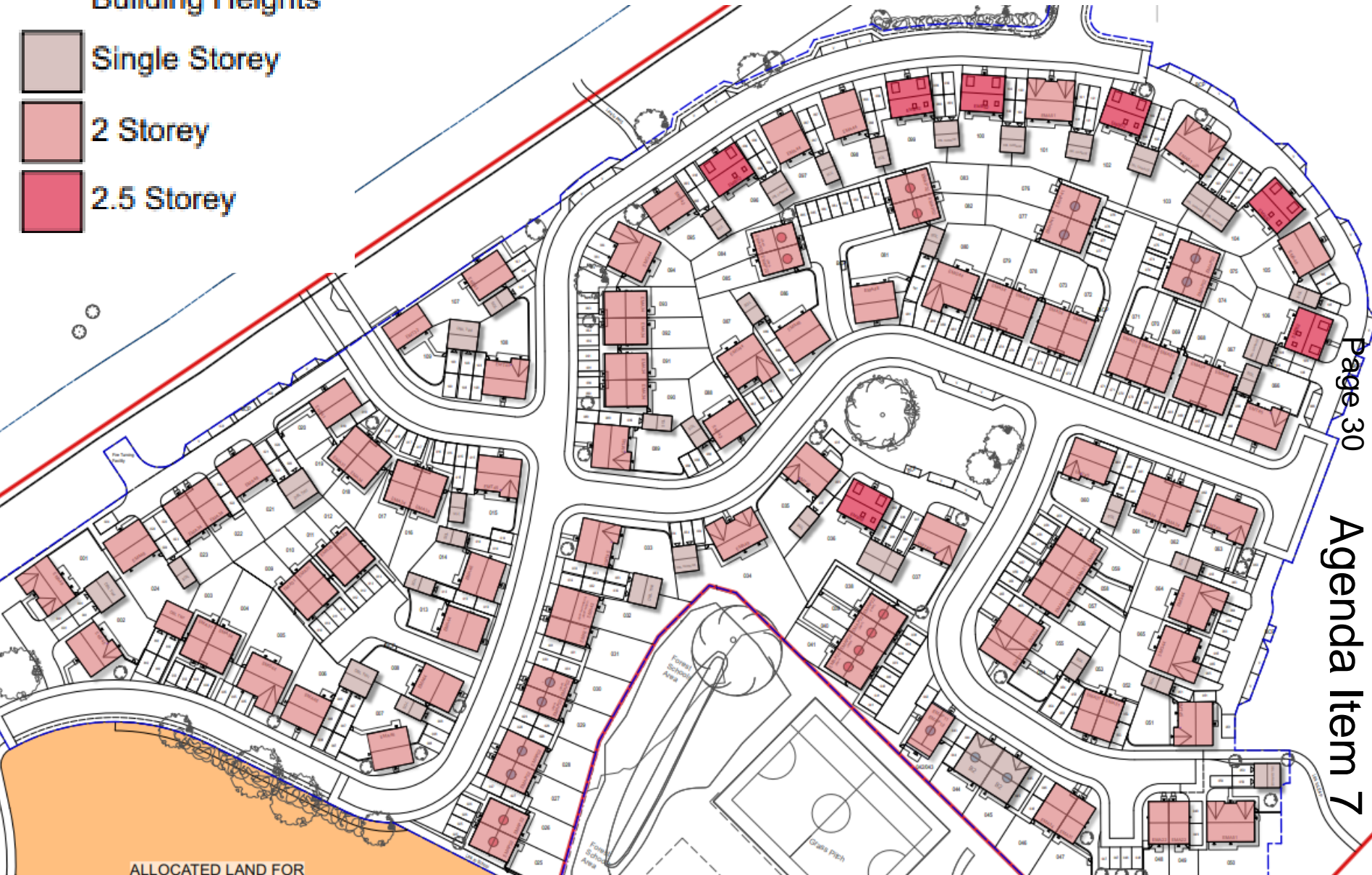
## Agenda Item 7





# Proposed Massing Plan

## Building Heights



# Proposed Materials Plan

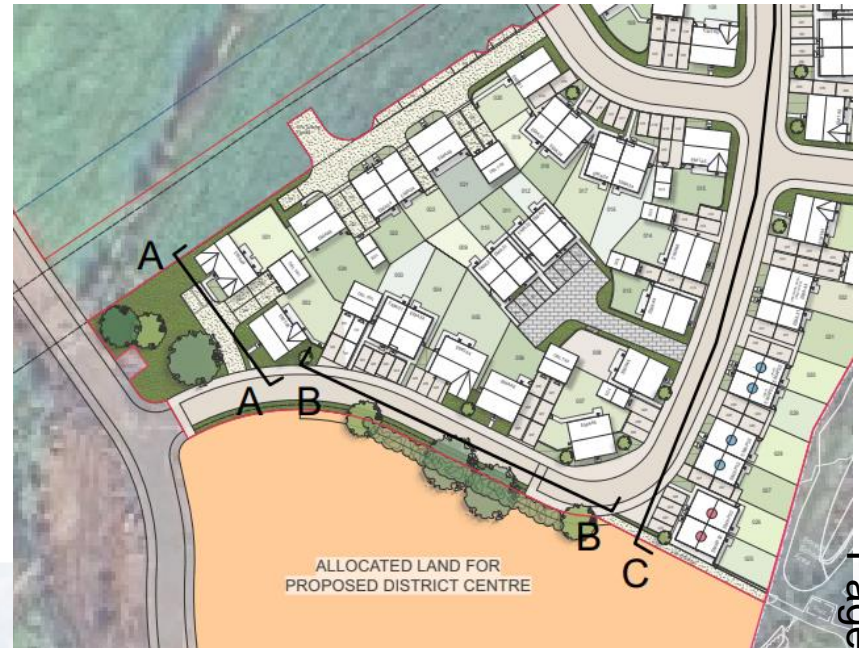




# Proposed Streetscene A-A & B-B



STREETSCENE A - A



STREETSCENE B - B

# Proposed Streetscene C-C & D-D





# Proposed Streetscene C-C



Page 34

STREETSCENE C - C



# Agenda Item 7

# Proposed Streetscene D-D



STREETSCENE D - D





This page is intentionally left blank